

CONNECTING REAL ESTATE IN THE NORTHEAST

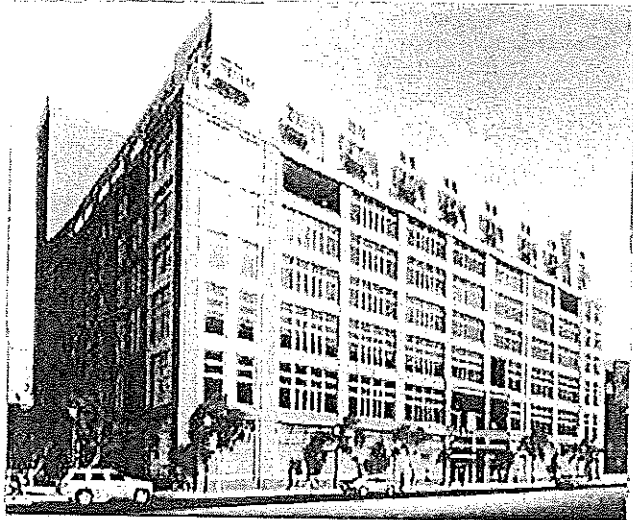
NORTHEAST REAL ESTATE BUSINESS

VOLUME 1, ISSUE 4

NOVEMBER 2004

TURCHI PROPERTIES DEVELOPS PHILADELPHIA CONDOMINIUM COMPLEX

Philadelphia — Turchi Properties has unveiled 23: A Condominium, a new residential building under development in Philadelphia, linking Center City and University City. The project is located at 23 South 23rd St. on the site of the former AAA parking garage built in 1912 and was designed by Philadelphia-based Cope Linder Architects. 23 will feature 85 units with 65 floorplans for lofts, one-, two-, three- and four-bedroom condos, and 12, two-story penthouses. Renovations to the property include coring out the center of the building for the inclusion of a 75-foot by 75-foot inner courtyard with glass-backed elevators and a six-story trellis. The lobby will feature a suspended, stainless steel staircase and stone finished floors. Covered parking will be provided and the entrance will feature heated sidewalks for melting the winter snow. 23 began pre-sales in September and has sold one-third of the residences. 23 is adjacent to the new Schuylkill Riverfront Corridor, a 200-acre mixed-use redevelopment along both banks of the Schuylkill River that will house residential living, retail, two office towers and restaurants interspersed with numerous walking trails and bridges.



Turchi Properties is developing 23, an 85-unit condominium community in Philadelphia.